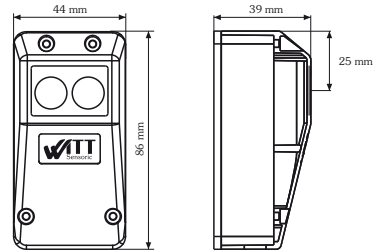


RP 25 reflective photo-electric switch



- range 0.5...15m, depending on the type of reflector
- immune to external light sources
- high degree of protection
- optional cable entry
- terminal compartment
- polarisation filter optical system
- test input
- operating voltage 10-40VDC or 24VAC $\pm 25\%$
- protected against power supply polarity reversal
- relay output
- easy adjustment of the optical sensor
- dirt indicator
- LED alignment indication



Declaration of conformity

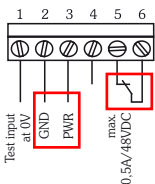
EMC directive 2014/30/EU
EN 61000-6-2 and EN 61000-6-3



Technical data

operating voltage	10...40VDC 24VAC, $\pm 25\%$	ranges	R30/60 = 0,5...8m RD82 SW4 = 0,5...12m R100/100 = 0,5...15m
operational current consumption	<100ms after power on max. 30mA/24V	indications	dual LED red/green
type of light	red, 680nm pulsed, polarised	light beam interrupted	= lights up red
aperture angle	approx. 1.5° total angle	light beam uninterrupted, spare critical function capacity.	= flashes red at 4Hz
output	relay, changeover contact	light beam uninterrupted, high spare function capacity.	= lights up green
switch rating	min. 1mA/min. 5VDC max. 0.6A/50VAC max. 0.5A/48VDC (resistive load)	additional function	test input (when 0V at terminal 1 the transmitter switches off)
response time	<10ms, detection of light beam interruption	type of connection	screw terminal max. 1.5mm ²
relay delay	when the light beam is uninterrupted again, the relay picks up with 100ms delay	casing material	lower part: ABS-GF15% upper part: PMMA, red
type of switching	responsive to brightness, i.e. the relay picks up when the light beam is uninterrupted	degree of protection	IP65, to EN60529
		operating temp.	-25°...60°C
		storage temp.	-35°...80°C
		weight	approx. 60g
		size	86x44x39mm ³ (LxWxH)

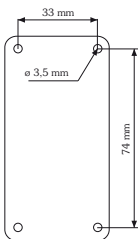
Terminal assignments



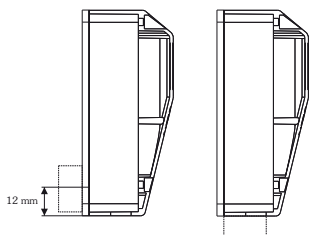
Note:

For test purposes the photo-electric switch switches the transmitter off when GND is applied to terminal 1. For reasons of safety the photo-electric switch is responsive to brightness, so that the relay picks up when the light beam is uninterrupted.

Size



Hole spacing



optional cable entry



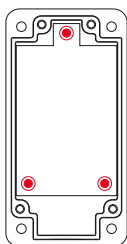
Rubber grommet
or
Cable gland
M12x1.5



Note:

The cable entry is moulded into the lower part of the casing and can be broken out. Either the rubber grommet or the cable gland (both supplied) can be used.

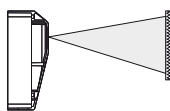
Fine adjustment



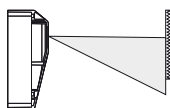
After mounting the photo-switch the light beam can be adjusted using 3 screws.

Important note!

The optical sensor is spring-mounted. All 3 screws are unscrewed by 1 turn factory-made, the maximum is 3 turns. The optical sensor is optimally aligned when the green LED lights up constantly.

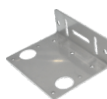


LED lights up:
100 % of the cone of light is hitting the reflector

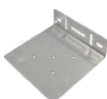


LED flashing:
Less than 100 % of the cone of light is hitting the reflector

Accessories



HW-LS mounting bracket
for the reflective photo-electric switch
Material: bright 1.5 1.4301 (V2A)
Ordering details
HW-LS 314847



HW-RD82 mounting bracket
for the RD82-SW4 reflector
Material: bright 1.5 1.4301 (V2A)
Ordering details
HW-RD82 314848



RD82 SW4 reflector
Mounting: screwable
Range: approx. 12m with RP20
Ordering details
RD82 SW4 314811



WSH-RD82 rain cover
for the reflector RD82-SW4
protection against rain, hail and snow,
impact resistant, UV-stable
material: PA6 GF15
Ordering details
WSH-RD82 315316



WSH-LS rain cover
for the reflective photo-electric switch RP20/RP25,
protection against rain, hail and snow,
impact resistant, UV-stable
material: PA6 GF15
Ordering details
WSH-LS 315315



R30/60 reflector
Mounting: screwable
Range: approx. 8m with RP20
Ordering details
R30/60 314810



Anti-condensation cover
for RD82 SW4 reflector
ISO RD82
Material: Polystyrene or Neopor
Ordering details
ISO-RD82 314849



Anti-condensation cover
for R30/60 reflector
ISO R30/60
Material: Polystyrene or Neopor
Ordering details
ISO-R30/60 314850